



ANNUAL REPORT
**SRA 2021: The Philippine
Sugarcane Industry Keeping
Abreast with Changes in the New
Normal**



SUGAR REGULATORY ADMINISTRATION

A Message from the Administrator



The sugarcane industry, as with the rest of the agriculture sector, was not spared by the adverse effects of the COVID-19 pandemic that started in 2020. With more than a year into the pandemic, quarantine restrictions, along with its challenges that remained during 2021, the road to economic recovery seemed far ahead. As the Agency directed to protect and ensure the development of the sugarcane industry, the Sugar Regulatory Administration, continued to act on its mandate to implement programs that answer to the needs of its stakeholders. This Annual Report highlights SRA's key accomplishments in fiscal year 2021.

SRA recognized the need to efficiently carry out programs and projects which have immediate social and economic impact to the farmers who are the most affected by the pandemic. Through the remaining appropriations for programs mandated by the Sugarcane Industry Development Act (SIDA), beneficiaries continued to receive interventions in terms of loans/financing through the Socialized Credit Program, and production

support services including start-up capital and farm mechanization support through the Block Farm & Research, Development and Extension programs. The Scholarship Program also continued to provide financial assistance to graduate and undergraduate students nationwide. Even with mobility restrictions, construction of farm-to-mill roads also continued.

Funded by its corporate revenues, SRA also implemented its priority extension programs to ensure that the farmers have enough support to continue farm operations even in the middle of the pandemic. These priority programs, which first started in 2020, are: a) Adopt a Small Sugarcane Farming Family; b) Accelerated Sugarcane Seed Farm Development and Distribution; c) Soil Rejuvenation and Fertilization Program; and d) Water Management and Irrigation Program.

Aside from implementing these programs, SRA also performed its regulatory functions such as efficient allocation of sugar production and monitoring of sugar prices to ensure that there is enough supply of sugar in the market and the price is stable that benefits both the consumers and the producers. It is worth noting that despite the disruptions in the usual farm and milling operations, raw sugar production remained at 2.143 MMT during Crop Year (CY) 2020 – 2021, which is only a slight decrease from the 2.145 MMT in CY 2019 – 2020.

With the lessons learned during this unprecedented time, the challenge for SRA is not only to cater the industry for faster recovery, but more importantly, is to put in place safeguard mechanisms that will strengthen the industry to be resilient in the face of adversities. SRA stands firm in its commitment to promote the advancement and competitiveness of the sugarcane industry to contribute towards the Department's vision of Masaganang Ani at Mataas na Kita.


Hermenegildo R. Serafica
SRA Administrator

Contents

| | Page |
|--------------------------------------|------|
| Mission, Vision & Quality Policy | 1 |
| Agency Profile | 2 |
| Industry Situationer | 4 |
| Performance Scorecard | 6 |
| Financial Highlights | 7 |
| SIDA Programs Highlights | 9 |
| Production Support Services | 14 |
| Research & Development | 15 |
| Laboratory Services | 17 |
| Environmental Monitoring | 19 |
| Extension Services | 20 |
| Top Priority Projects | 21 |
| Agriculture & Biosystems Engineering | 23 |
| Regulatory Services | 24 |
| General Administrative Services | 26 |
| Procurement & Maintenance | 27 |
| Compliance | 28 |
| Support Services | 29 |
| Gender & Development | 31 |
| Directory | 32 |

Vision

“By 2040, the Philippines shall have a globally competitive sugarcane industry that supports the food, power, and other related industries through an institutionally competent SRA and committed stakeholders, for a secured future for Filipinos.”

Mission

“SRA is a Government Owned and Controlled Corporation which formulates responsive development and regulatory policies, and provides RD & E services to ensure sufficient supply of sugarcane for a diversified, sustainable and competitive industry that improves productivity and profitability of sugarcane farmers and processing industries, and provides decent income for workers towards enhancing the quality of life of Filipinos.”

Quality Policy

"SRA is committed to promote the advancement and competitiveness of the sugarcane industry amidst global challenges. It shall continue to improve the way it does its business in an effort to meet the expectations of its clientele while maintaining compliance to applicable legal requirements. It shall ensure the continual improvement of its human resource capabilities as response to the current and strategic needs of the industry.”

Corporate Values

Patriotism
Integrity
Excellence
Spirituality
Professionalism
Accountability

Agency Profile



Mandate

The Sugar Regulatory Administration (SRA) was created by virtue of Executive Order No. 18 s. 1986 which declares that: “It shall be the policy of the State to promote the growth and development of the sugar industry through greater and significant participation of the private sector and improve the working conditions of laborers”.

Republic Act (RA) 9367 s. 2006 (Biofuels Act of 2006) mandated SRA as member of the National Biofuel Board (NBB), to develop and implement policies supporting the Philippine Biofuel Program and to ensure security of domestic sugar supply.

RA 10659 or the Sugarcane Industry Development Act of 2015 (SIDA) further declares the policy of the State to promote the competitiveness of the sugarcane industry and maximize the utilization of sugarcane resources, and improve the incomes of farmers and farm workers, through improved productivity, product diversification, job generation, and increased efficiency of sugar mills.

At present, the SRA has two (2) offices in Quezon City and Bacolod City, two (2) Research and Experimental Centers in Pampanga and Negros Occidental, twenty-six (26) Extension Services Mill District Offices in sugarcane districts, and Regulation Offices in twenty-seven (27) sugar mills and thirteen (13) bioethanol distilleries.

Agency Profile

Corporate Objectives

Executive Order No. 18 s. 1986

- 1.To institute an orderly system in sugarcane production for the stable, sufficient and balanced production of sugar, for local consumption, exportation and strategic reserves;
- 2.To establish and maintain such balanced relation between production and requirement of sugar and such marketing conditions as will ensure stabilized prices at a level reasonably profitable to the producers and fair to consumers;
- 3.To promote the effective merchandising of sugar and its by-products in the domestic and foreign markets so that those engaged in the sugar industry will be placed on a basis of economic viability;
- 4.To undertake such relevant studies as maybe needed in the formulation of policies and in the planning and implementation of action programs required in attaining the purposes and objectives set forth under E. O. 18 s. 1986.

Republic Act 9367 s. 2006 (Biofuels Act of 2006)

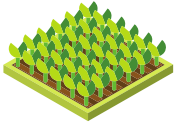
- 1.To develop and implement policies supporting the Philippine Biofuel Program;
- 2.To institute a program that would guarantee that a sufficient and reliable supply of feedstocks is allocated for biofuel production;
- 3.To publish information on available and suitable areas for cultivation and production of sugarcane for bioethanol production.

RA 10659 or the Sugarcane Industry Development Act of 2015 (SIDA)

- 1.To boost the production of sugarcane and sugar and to increase the income of sugarcane farmers / planters and workers through the implementation of sugarcane productivity improvement programs such as block farming, farm support initiatives like farm management, technical assistance to sugarcane farmers, socialized credit, farm mechanization, research and development, extension services, scholarship and infrastructure programs;
- 2.To establish a supply chain monitoring system from sugarcane to sugar at the retail level to ensure sufficiency and safety of sugar;
- 3.To classify imported sugar according to its appropriate classification when imported at the time when domestic production is sufficient to meet domestic sugar requirements



Industry Situationer Crop Year 2020-2021



Total sugarcane area for sugar production

399,166 hectares

10 regions, 28 provinces

- 41,636 hectares (10.43%) - Luzon
- 272,617 hectares (68.30%) - Visayas
- 84,913 hectares (21.27%) - Mindanao



99,955 farmers

84% or 83,962 are small farmers cultivating farms which are 5 hectares and less



25,276,061 Metric Tons

Total Sugarcane Production

2,143,018 Metric Tons

Total Raw Sugar Production

Productivity

- **63.32 tons cane/hectare**
- **107.37 LKG/hectare**
- **1.70 LKG / tons cane**



Production Facilities

- **27 Sugar Mills**
Total capacity of 201,528 canes per day
- **12 Sugar Refineries**
Total capacity of 7,131 metric tons per day
- **13 Bioethanol Distilleries**
Total capacity of 7,131 metric tons per day
- **15 Commercial Biomass Power Generators**
(12 sugar mills and 3 distilleries)
Total installed capacity of 366 MW



112,008 Metric Tons

Total U.S. Exports



Domestic Consumption

- 2,145,374 Metric Tons - Raw Sugar
- 909,742 Metric Tons - Refined Sugar



Average Prices of Sugar and Molasses:

₱ 1,682.47 / 50-kg bag

Millsite Composite Price (Raw Sugar)

₱ 10,200.00 / Metric Ton

Molasses Millsite Price

**Wholesale Prices (Metro Manila)
per 50-kg bag**

Brown - **₱ 1,737.50**

Refined - **₱ 2,233.33**

**Retail Prices (Metro
Manila) per kilo**

Brown - **₱ 45.00**

Refined - **₱ 51.50**

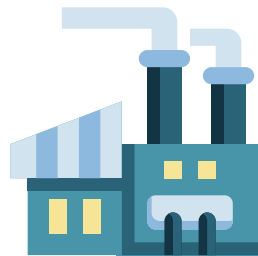
Bioethanol Industry Situationer Crop Year 2020-2021



12,979.58 hectares

Total area of sugarcane farms for bioethanol production

- Batangas - 4,130.51 hectares
- Isabela - 4,559.07 hectares
- Negros Occidental - 4,290.00 hectares



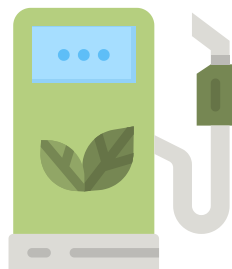
Production Capacity

- 13 Bioethanol Distilleries
- 456 million liters total annual production capacity



Feedstock Utilization 2021

- 636,461 Metric Tons - Sugarcane
- 1.186 Million Metric Tons - Molasses



10 %

Mandated gasoline blend

354.6 M Liters

Actual bioethanol production



₱ 57.48 / Liter

Average Bioethanol Price Index

2021 Performance Scorecard

| Strategic Objectives (SO) | Strategic Measure | Target | Actual | Attainment |
|---------------------------|---|---------|---------|------------|
| SO 1 | Productivity (tons cane/hectare) | 58 | 63 | 100% |
| | Sugar Production (MMT) | 2.19 | 2.143 | 98% |
| | Average Income/Hectare of Block Farm (Php) | 42,000 | 42,000 | 100% |
| SO 2 | Volume of Buffer Stock (MT) | 240,000 | 396,105 | 100% |
| SO 3 | Percentage of satisfied customers | 90% | 85% | 94% |
| | Number of Accredited Block Farms | 50 | 53 | 100% |
| | Number of Scholars Enrolled | 767 | 688 | 90% |
| SO 4 | Number of Completed Research Projects in Breeding Program | 21 | 19 | 91% |
| | Number of Completed Research Projects in Production Technology | 12 | 11 | 92% |
| SO 5 | Percentage compliance to SRA Policies, Rules and Regulations by Millers and Traders | 100% | 100% | 100% |
| SO 6 | Percentage of Personnel with Required Competencies Met | 100% | 38% | 38% |
| | ISO 9001 Certification | Passed | Passed | 100% |
| SO 7 | EBITDA Margin (EBITDA/Total Revenue) | 15% | 28% | 100% |
| | Budget Utilization Rate | 100% | 77% | 77% |

SO 1: Empowered Sector Significantly Contributing to Food Security and Poverty Reduction

SO 2: Maintained Balanced Sugar Supply and Demand Requirements

SO 3: Improved Income, Profitability and Global Competitiveness of the Sugarcane Industry

SO 4: Provide Responsive Technical Assistance and Extension Services to Sugarcane Industry Stakeholders

SO 5: Enforce and Implement Pro-Active and Effective Policies, Rules and Regulations

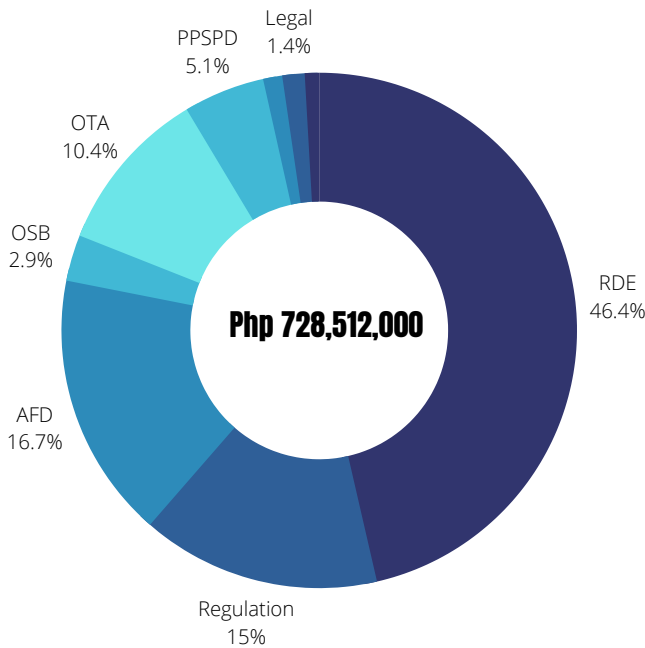
SO 6: Sustain the Development of Expertise and Human Resources in the Field of Sugarcane Industry, Development and Related Area

SO 7: Maintain Sound Financial Management

2021 Financial Highlights

Total Approved Budget

Corporate-Operating Budget (COB)

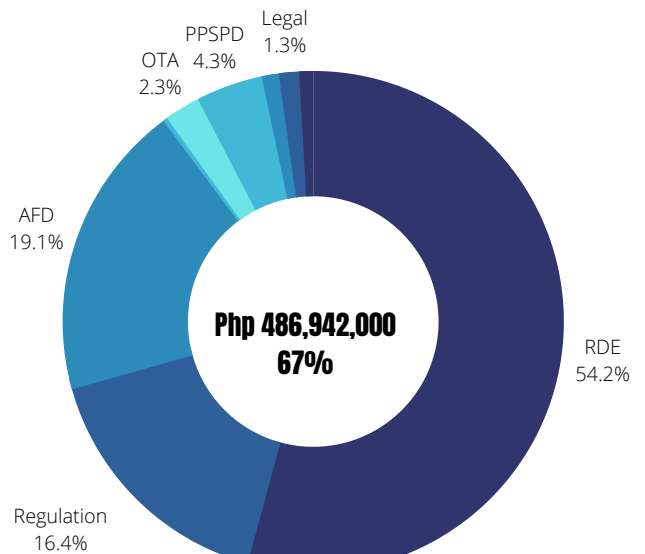


In 2021, the Sugar Board approved the Corporate Operating Budget (COB) in the amount of Php 728.512 Million. In terms of expense class allocation, 33% are for Personnel Services (PS), 61% are for Maintenance and Other Operating Expenses (MOOE), and 6% are for Capital Outlays (CO). The COB are from the revenue generated by SRA as GOCC and is used for funding relevant Projects, Activities, and Programs (PAPs) for sugarcane industry not funded by National Subsidy through General Appropriations Act (GAA).

RDE - Research, Development, & Extension
 AFD - Administrative and Finance
 OSB - Office of the Sugar Board
 OTA - Office of the Administrator
 PPSPD - Planning, Policy, and Special Projects Department
 IAD - Internal Audit Department
 GAD - Gender and Development

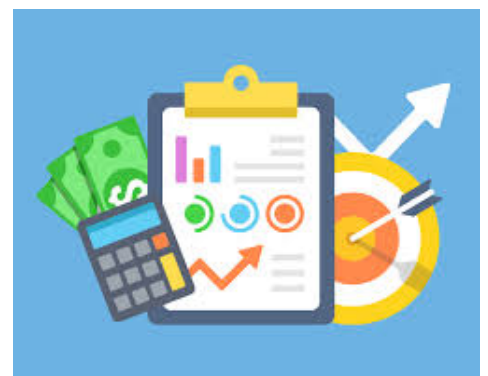
Budget Utilization

Corporate-Operating Budget (COB)



In terms of COB utilization, SRA utilized 67% or Php 486.942 Million out of Php 728.512 Million approved COB. The utilization rate in terms of expense class utilization is:

- Personnel Services - 76%
- Maintenance and Other Operating Expenses (MOOE) - 62%
- Capital Outlay - 72%

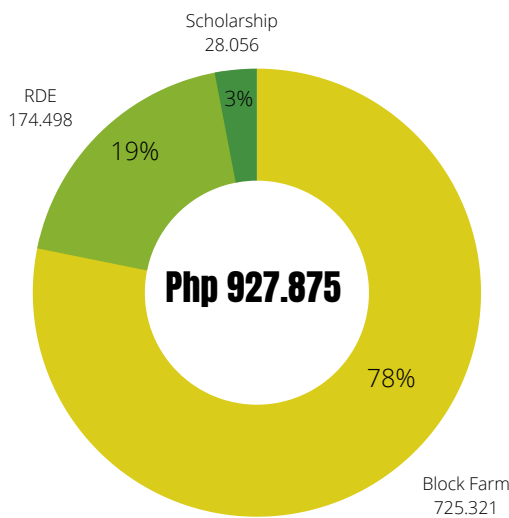


2021 Financial Highlights

Total Approved Budget

National Government Subsidy (SIDA Programs)

Rebudgeted SIDA Programs (in Million PhP)



Funds for Block Farm, RDE and Scholarship Programs were unspent budget from 2016 to 2019 GAA which are re-budgeted in 2021 for continuing interventions for block farms, maintenance of on-going scholars and funds for multi-year RDE projects.



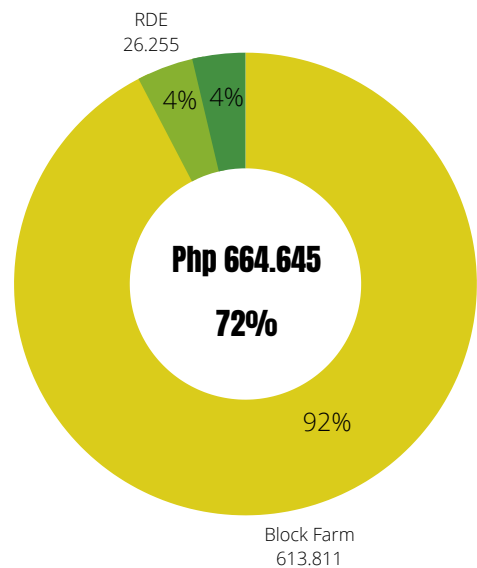
Php 712.26 Million

The **Infrastructure Program** is the only SIDA Program that has allocation in the 2021 General Appropriations Act (GAA) in the amount of Php 712.260 Million. This fund was transferred directly to Department of Public Works and Highways (DPWH).

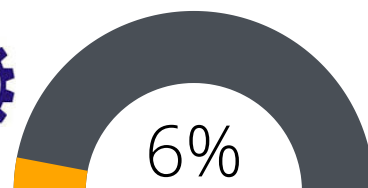
Budget Utilization

National Government Subsidy (SIDA Programs)

Rebudgeted SIDA Programs (in Million PhP)



Funds for Block Farm and Scholarship Programs are directly managed by SRA. In 2021, the utilization rate for Block farm and Scholarship is 85% and 88%, respectively. Funds for RDE are transferred to research institutions like SUCs where the Project Leaders manage the disbursements of funds. Research institutions were only able to utilize 15% of the funds in 2021.

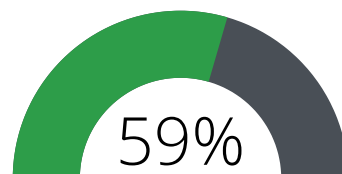


As of December 2021, only 6% or Php 45.573 Million out of Php 712.26 Million fund was only utilized by DPWH. However, all of the projects are obligated/awarded and full utilization of funds is expected in 2022.



Php 624.625 Million

The Program Fund for **Socialized Credit Program** is managed by Land Bank of the Philippines (LBP) which is from 2016 and 2017 GAA allocation. This fund is transferred by SRA to LBP for the implementation of Socialized Credit Program.



As of December 2021, 59% or Php 369.69 Million was utilized for loan releases (outstanding loans) and program expenses which includes management fee of LBP and loan insurance of borrowers.

Highlights of Accomplishments - SIDA Infrastructure Program

2021 Accomplishments

PHP 712.26 Million

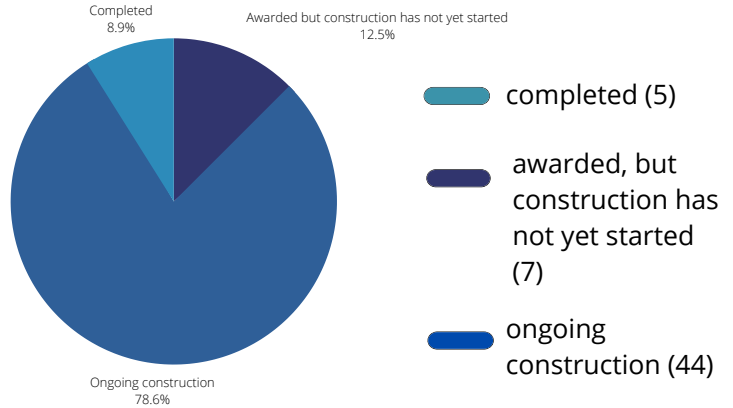
program budget

46.29 kilometers

total length of Farm-to-Mill Road (FMR) projects

56

number of project sites



Cumulative Accomplishment - from 2016 to 2021

PHP 3.399 Billion

program budget

177.63 kilometers

total length of FMRs constructed

57 meters

total length of bridge constructed

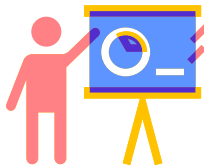
- From 2016 to 2021, the total appropriation for the Infrastructure Program has a total of P3,398,705,000.00.
- For FMR project, a total of 172 projects was completed with a total of 177.63 kilometers.
- The 3 bridge projects with a total length of 57 meters located in Batangas, Tarlac and Negros Occidental were also completed.
- On-going construction of 51 FMR projects with a total length of 43.69 kilometers.



On-going construction of 2021 FMR Project in Crossing Igmamatay to Sitio Igmamatay, Brgy. Codcod, San Carlos City Neg. Occ.

Highlights of Accomplishments - SIDA Block Farm Program

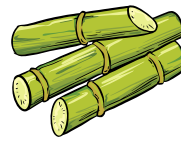
There is no funding allocation provided for Block Farm Program for 2021 GAA. SRA through the Extension Services accomplished the following interventions for the year using the unspent budget of Block Farms from 2016 to 2019 GAA:



Capacity Building

Basic Sugarcane Management Seminars
Outreach Program for the Sugarcane Industry
Financial Literacy Training, etc

2,491 participants



33.2 hectares of HYV nurseries established

8.026 million of seedpieces of caneplants produced



Soil Rehabilitation

264.26 hectares of land applied with agricultural lime



Start-up Capital

PHP 8,745,723.85

worth of agricultural inputs and labor



Farm Mechanization Support

103 units farm tractors with implements

56 units of sugarcane wholestalk cutters

30 units sugarcane grabber-loader

17 units of fertilizer applicator

75 units of moldboard plow, furrower, and hydraulic harrow



Irrigation

4 units of Shallow Tube Wells (STWs) installed

Cumulative Accomplishment - from 2016 to 2021

★ **213** established block farms ★ **5,628** farmer-enrollees ★ **8,416.17** has area covered



748 units of farm equipment and machineries provided



84 food houses established as livelihood for Block Farms



Php 252.271 Million

worth of Start-Up Capital for fertilizers, planting materials, and labor provided

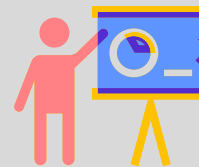


130,202 bags of soil lime provided for soil rehabilitation



160.38 hectares

of nurseries established for Block Farms as source of planting materials of High-Yielding Varieties



Php 9.348 Million

utilized funds for capacity building activities for Block Farms such trainings / seminars related to basic farm management, financial literacy, trainings for farm managers and officers, etc.

As of December 2021, SRA has established the operations of 213 block farms across all sugarcane milling districts nationwide.

Interventions were provided to these Block Farms including: capacity building, soil rehabilitation, establishment of HYV nurseries, provision of start-up capital, farm mechanization support and establishment of food houses, among others.

Record showed an increase in productivity (TC/Ha) by 19.2-28.1% in terms of sugarcane and increase in sugar production (LKg/Ha) by 26.1-32.0%.

Other government agencies have provided livelihood assistance to Block Farms are Department of Agrarian Reform, Department of Agriculture and Department of Labor and Employment to encourage them to establish alternative sources of income.

Highlights of Accomplishments - SIDA RDE Program



★ **21**

total completed projects, 2016-2021

★ **16**

ongoing projects, 2021



4 Completed Projects in 2021



Nutrient and Water Management for SRA Block Farms Towards Technical & Economic Viability



The results of the study suggest that higher productivity was achieved with those who were irrigated through drip irrigation. Drip irrigation was also found to save around 50% water than that which used furrow irrigation.



Characterization of HFCS & Comparative Effects of Cane Sugar and HFCS in Blood Glucose and Lipid Profile of Sprague-Dawley Rats



This project determined the effects of high fructose corn syrup, as compared to table sugar, on the body composition, glucose and lipid profile of Sprague-Dawley rats.



Upgrading of the ERSL of ISU-Cabagan Campus



The upgraded laboratory will cater to the soil analyses needs of sugarcane growers in Isabela and Cagayan in order to aid them in increasing their productivity levels. Several laboratory equipment was delivered to the laboratory and they were also capacitated in the procedure of analyses of soil samples.



Assessment of Sugarcane Varieties and Germplasm Collection for Drought and Waterlogging Tolerance



Through the project, a protocol for drought tolerance and the use of thermal imaging and image analyses tools were developed. For the waterlogging screening, the protocol for the trials was established, NIR spectroscopy were also used on rapid assessment of sugarcane. An image analysis software was also developed in order to quickly assess the reaction of the varieties to drought or waterlogging.

Notable Accomplishments for Ongoing Projects

VARIETAL IMPROVEMENT

Utilization of In Vitro Technology for Conservation and Micropropagation

- A total of 192 accessions were reintroduced in vitro for this year.
- Continued study on the development of medium and long term in vitro conservation strategies.
- Conducted a potting out study and a study on the use of 1-Naphthaleneacetic Acid and Indole-3-Butyric Acid as root growth enhancers.

Sugarcane Varietal Development to Develop High-Yielding and Climate Change Varieties

- Conducted advance field trials in 10 promising lines (from 37 hybrids) using the field practices in the National Cooperative Testing Manual for Sugarcane of Technical Working Group National Seed Industry Council (TWG NSIC) – DA.
- Selected fifteen (15) hybrids from 2018 hybridization and propagated them at UPLB-IPB.
- Five hundred forty (540) were selected from 2019 hybridization based on germination, growth and vigor. Fifteen of which were selected and propagated.

PROPAGATION

Rapid Propagation and Distribution of High-Yielding Varieties

- As of 2021, 61 nurseries were established nationwide with a total area of 414.67 hectares.
- The total number of lacsas of canepoints produced has reached 9,008.46 lacsas as of December 2021. There were 1,252 farmer beneficiaries/takers of canepoints.

SOIL FERTILITY IMPROVEMENT

Soil Characterization of the Sugarcane Mill Districts Nationwide

- The PMT monitored and maintained the 40 soil monoliths from January to June 2021. Reviewed and finalized the descriptions of 55 soil profiles, inherited soil fertility were also determined per representative of Soil Series. Analysis of chemical and physical properties of soils was also completed in December 2021. Initial drafted soil series compendium was subject for lay-outting, review and editing.

FARM MECHANIZATION

Design/Fabrication of Farm Mechanization Machineries, Equipment and Implements and Acquisition of Prototypes for Testing

- A total of 5 brand new units of Sugarcane Grabber Loader and 26 brand new units of Tractor Driven Wholestalk Sugarcane Harvester were completely delivered in December 2021 to various beneficiaries (SRA, MDDCs, Planters Association, and Cooperatives). Afterwards a test protocol for the prototype of equipment shall be prepared as a basis for data gathering and studying the performance of the equipment per sugar mill district.

Performance Trials & Evaluation of Various Sugarcane Harvesting Machineries in the Various Sugarcane Mill Districts

- A total of 29 brand new units of Sugarcane Grabber Loader and 29 brand new units of Tractor Driven Whole stalk Sugarcane Harvester were distributed to various beneficiaries (SRA, MDDCs, Planters Association, and Cooperatives).

Highlights of Accomplishments - SIDA Scholarship Program

2021 Accomplishments



86

SIDA scholar graduates



689

continuing scholars



78 M

of financial benefits released to scholars

Cumulative Accomplishment



1,143

scholars



455

graduates



54

graduates employed in the sugarcane industry

Starting A.Y. 2016-2017 up to date, the CHED and SRA has produced a total of **455 graduates** of Agriculture courses and other relevant programs and fields of discipline. **Fifty-four (54)** of which are **currently employed within the sugarcane industry.**

As to the continuing scholars, there were **689** for the Second Semester of A.Y. 2020-2021 and **688** for the First Semester of A.Y. 2021-2022.

PHP 33.428 million was released for the **tuition fees, monthly stipend, book allowance, and thesis and dissertation allowance of scholars** for the Second Semester of A.Y. 2020-2021.

For the First Semester of A.Y 2021-2022, **PHP 44.571 million** was released to the scholars.

Highlights of Accomplishments - SIDA Socialized Program

2021 Accomplishments

188

loans of individual farmers endorsed

PHP 28.99 M

amount of endorsed loans



45

approved loans

PHP 37.69 M*

amount of approved loans
*includes approved loans for loans endorsed in 2020

247

released loans

PHP 158.75 M**

amount of released loans
**includes releases for approved loans in 2020



Cumulative Accomplishment

PHP 624.625 M

total program fund
(GAA 2016 & 2017)

59.18%

fund utilization rate
as of December 2021

PHP 504.02 M

total amount of disbursements covering releases to
2,275 borrowers

PHP 12.88 M

total program expenses
(management fees, CIBI fees, insurance)

PHP 254.93 M

fund balance
as of December 2021

PHP 147.21 M

total amount of collections
(Principal + Interest)

Production Support Services

Canepoints production and distribution. The Research Centers of SRA in La Granja Agricultural Research Center (LGAREC) in Negros Occidental and Luzon Agricultural Research Center (LAREC) in Pampanga propagates good quality planting materials of High-Yielding Varieties (HYVs).

In 2021, the 2 Research Centers were able to produce 11,582,240 seedpieces and made accessible to 174 recipients which includes sugarcane farmers, planters associations, Mill District Development Councils, and block farms.

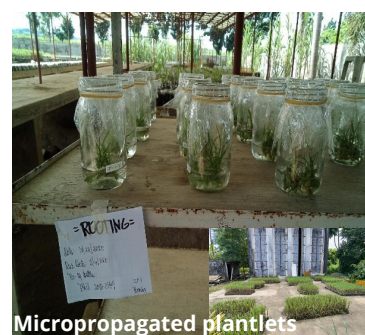


LGAREC, Negros Occidental



LAREC, Pampanga

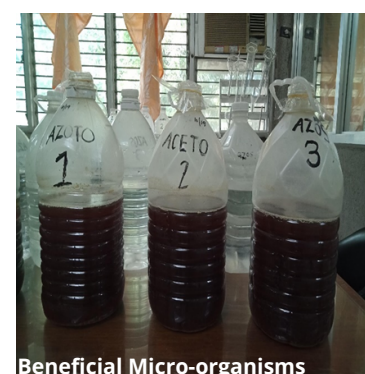
Micropropagated plantlets. SRA also maintains micropropagated laboratory in Negros Occidental. In 2021, a total of 115,510 micro-propagated plantlets were produced with a total of 29 recipients which includes sugarcane farmers, Mill District Development Councils, and planters associations



Micropropagated plantlets

Beneficial Micro-organism (BMO). SRA promotes the use of BMO, a sugarcane specific, molasses-based nitrogen fixing foliar fertilizer to reduce cost of fertilization. In 2021, SRA has produced and distributed 6,225.72 gallons of BMO to 179 recipients which includes sugarcane farmers, planters associations, Mill District Development Councils, and block farms.

- BMO can reduce/substitute nitrogen demand by at least 25 to 30%.
- Yield – 1.84 LKG/hectare
- SRA farmer's training for farm-level production of BMO.
- Distributed for free to farmers



Beneficial Micro-organisms

Trichogramma strips. Trichogramma is a biological control against stem borers. SRA's Trichogramma laboratory in LGAREC has produced 42,919 strips, and there was a total of 68 recipients, which includes sugarcane farmers, planters associations, Mill District Development Councils, and block farms.



Trichogramma chilonis

Research and Development



LGAREC - Completed Research Projects

1. Canepoint Production of Phill 99-1793 and Phil 2006-2289 micropropagated plantlets at a different furrow distance- Alejandrino, M.T.D. and A.C. Alimpulos

As to yield parameters, significant results on canepoint production were obtained regardless of variety at T4 which recorded 75.8 (Phil 99-1793) and 70.9 (2006-2289) lacsas, accordingly. Moreover, given the yield production, the high net benefit for Phil 99-1793 and Phil 2006-2289 observed on T4 was at Php 34,650.13 and Php 26,558.10, respectively. This is attributed mainly due to the number of canepoints produced by these respective varieties.

2. Yield Evaluation on Phil 2006-2289 Inoculated with Different Nitrogen Fixer - Alejandrino, M.T.D and A.C. Alimpulos

Results of the study revealed that there is no significant difference observed in all growth parameters as to plant height, number of tillers, millable stalks, stalk length and stalk diameter; and also showed no significant difference on yield parameters on sugar rendement, sugar yield and cane tonnage of Phil 2006-2289 inoculated with different nitrogen fixers, accordingly.

3. Performance of Phil 2009-0919, Phil 2010-0149, Phil 2009-1567 and Phil 2009-1969 under Waterlogged Condition- Bañas, T.B., Carpentero, A., De Jesus Jr., R., Valdeviezo, R.G. and A.C., Alimpulos

Results showed significant differences on growth and yield parameters such as stalk length, weight, cane tonnage and sugar yield. On yield parameters, Phil 2009-1969 obtained significantly higher tonnage (99.39 TC/Ha) comparable with Phil 2009-0919 (98.11 TC/ha). Sugar yield was observed highest on Phil 2009-0919, Phil 2009-1969 and Phil 2010-0149 with an average of 183.14, 180.74 and 131.53 LKg/Ha respectively. The results of the study suggest that Phil 2009-0919, Phil 2010-0149 and Phil 2009-1969 can tolerate waterlogged condition.

4. 2nd Ratoon performance of 10 high yielding Phil varieties- Bañas, T.B. Alimpulos, A., De Jesus Jr., R. and R. Valdeviezo

Of all varieties evaluated, Phil 2006-2289 maintained its high tonnage (102.54 TC/Ha) while Phil 2006-1899 had an average cane yield of 99.58 TC/ha. In terms of sugar rendement, Phil 2005-1763 got significantly highest value of 2.20 LKg/TC. Comparable results were obtained by the two varieties from the 2006 series. Phil 2005-1763, Phil 2006-2289 and Phil 8013 had sugar rendement of not less than 2.0 LKg/TC. Sugar yield was observed highest on Phil 2006-2289 having 213.55 LKg/Ha and Phil 2006-1899 having 193.31 LKg/Ha. Both varieties out yielded the standard variety Phil 8013.

5. Growth and yield validation of new HYV using various planting materials- Alimpulos, A.C., Bañas, T.B., Valdevieso, R.G. and R. De Jesus

Result showed significant influences on growth and yield parameters (plant height, tiller, tonnage and sugar yield). Plant height and number of tillers at 3 and 5 MAP (months after planting) from treatments using standard canepoints and one eye cuttings were significantly higher compared to wholestalk planting.

On yield parameters, significantly higher tonnage was observed on treatments using standard canepoints (95.78 TC/Ha) comparable to one-eye cuttings (86.90 TC/Ha) while the lowest was observed on wholestalk (73.84 TC/Ha). Comparably higher sugar yields (LKg/Ha) was also observed on standard canepoints (231.34 LKg/Ha) and one-eye cuttings (202.84 LKg/Ha). Lowest sugar yield was observed on whole stalk planting with a mean sugar yield of 174.83 LKg/Ha. Based on the results of the study, it is recommended to use either standard canepoints or one-eye cuttings in attaining higher yield of new high yielding varieties.

6. Tolerance of three sugarcane high yielding varieties to drought imposed at tillering stage Bañas, T.B., Alimpulos, A.C., Valdevieso, R.G., De Jesus, R. and A. Carpentero

Results showed percent leaf rolling was observed highest on Phil 2007-2081 with an average of 60.42%. Phil 8013 produced significantly taller, bigger and heavier stalks with 353.00 cm, 2.66 cm and 1.70 Kg respectively.

Yield parameters in terms of cane tonnage, sugar rendement and sugar yield were not significant. However, high tonnage was noted on Phil 2008-0909. Sugar rendement and sugar yield of the three varieties ranged from 2.35 to 2.63 LKg/TC and 221.44 to 227.45 LKg/Ha respectively.

Research and Development



LAREC - Completed Research Projects

1. Preliminary Yield test of Phil 2015 series varieties - Sarol, R. and M.V. Serrano

Based on sugar yield, nine clones were found to be either significantly higher to one of the check varieties or comparable to one or both check varieties, Phil 8013 and Phil 7544. The clones also passed the selection criteria for disease resistance to smut and downy mildew.

The clones which are recommended to undergo ECOTEST/NCT are Phil 2015-0533, Phil 2015-0435, Phil 2015-0821, Phil 2015-0867, Phil 2015-1181, Phil 2015-0489, Phil 2015-0125, Phil 2015-0121, Phil 2015-0217.

2. Screening of selected Phil 2014 series varieties for resistance to downy mildew - Casupan, A., Vicente, J. and M.V. Serrano

Among the fifteen clones of Phil 2014 series, fourteen test clones were rated very highly resistant to resistant to resistant: Phil 14-0013, Phil 14-0417, Phil 14-0393, Phil 14-0243, Phil 14-0919 and Phil 14-1057 were very highly resistant; Phil 14-0005, Phil 14-0009, Phil 14-0727, Phil 14-0747, Phil 14-0679, Phil 14-0267 and Phil 14-0983 were highly resistant; and Phil 14-0389 was resistant. Phil 14-0703 was rated intermediate average. Except for Phil 14-0703, all other test clones are recommended for agronomic testing may be further screened for the resistance to downy mildew.

3. Yield Potential Assessment of Three Sugarcane Phil Varieties with Different Ages at Harvest under Agroclimatic Conditions of Pampanga Mill District, Philippines - Alviar J.A. and M.V. Serrano

Economic analysis showed that delaying the harvest of all varieties up to 13 months of planting showed significantly higher net income and ROI. The analysis of time equity indicated the time value at ripening stage is considerably more important to raise the net income of farmers than harvesting prematurely with low sugar output and starting another cropping season without optimizing the yield of the varieties.

4. Influence of Season of Planting to incidence of Sugarcane Smut host by *Sporisorium scitamineum* - Casupan, A., Vicente, J., Sarol, R. and M.V. Serrano

Highest smut incidence was observed on early-season planted canes in both plant (26.75%) and ratoon canes (37.81%). Mid-season planted canes produced the lowest smut incidence in the plant cane (3.96%) and mid- and late-season planted canes in the ratoon. The high amount of rainfall at seven months of age contributed significantly in lowering the incidence of smut since it reduces the amount of teliospores in the atmosphere.

5. Influence of Plowing depths on cane and sugar yields of Phil 00-2569, Phil 06-1899 and Phil 06-2289 in Angeles Loamy Sand - Manlapaz, B. G., Locaba, R. D., Guiyab, N.C., Sarol, R. and M.V. Serrano

In the plant cane no significant differences were observed in tonnage, sucrose content, and sugar yield of the varieties. However, in the ratoon significantly higher tonnage was produced by Phil 00-2569 and Phil 06-1899. Significantly higher tonnage were also obtained at 40 and 50 cm depths.

6. Canopy structure and light interception characteristics of HYVs in relation to yield - Sarol, R. and M.V. Serrano

Varieties exhibited different leaf and canopy attributes. A strong correlation was observed between cane tonnage and PAR and LAI, moderately with CRC and TCO, weakly with leaf length and LIA. Sugar rendement is perfectly correlated with Brix was CRC, moderately were PAR and LAI, weakly with LIA. With Pol, moderately correlated were CRC and PAR, weakly with LAI and TCO. This suggests that varieties with low PAR, high LAI, CRC, and TCO should be considered when selecting for high yield. These characteristics would allow the leaves to intercept as much solar energy available to produce the required photosynthetic products to sustain growth and development to generate a high yield.

7. Influence of drying period on the juice and yield quality of sugarcane as affected by moisture - Manlapaz, B.G., Locaba, R.D., Guiyab, N.C., Sarol, R., and M.V. Serrano

The soil moisture drying-period showed inconsistent volumetric moisture content but gave comparable brix readings of the cane juice. However, it significantly decreased the percent polarity and the apparent purity of the cane juice of all the treatments. Tonnage(TC/Ha) was not considerably affected by days of drying period but sugar rendement (LKg/TC) and sugar yield(LKg/Ha) were significantly higher at 0, 2 and 4 days drying periods. Returns on investment (ROI) were also higher at 0, 2, and 4 days with ROI of 0.77, 0.74 and 0.69 respectively.

Laboratory Services



Sugar Reference Laboratory

Samples Analyzed

- 5,413 samples of soil, fertilizers, cane juice, plant tissues, wastewaters and other agro-based materials
- 160 weekly composite from sugar mills for polarization, moisture, ash, color, sulfur dioxide and dextran
- 1,086 samples of sugar and molasses
- 223 samples of refined sugar
- 184 biweekly composite from refineries
- 39 special samples from various walk-in clients

Test Certificates Issued

- 411 test certificates for Sugar Reference Services
- 539 regulatory documents on sugar and 46 on molasses quality



Harmonization of Sugar Mill Laboratory Analytical Facilities

The project includes visits to the sugar mills and refineries to validate the uniformity of laboratory methods and recommend harmonized laboratory procedure. A visit to the following mills were conducted:

- Victorias Milling Company, Inc.
- URC-SURE La Carlota
- URC SURE-Balayan
- Central Azucarera Don Pedro

Technical Expertise Sharing

- DA Food Safety Focal Group
- Food Safety Regulation Coordinating Board (FSCRB) for the Delineation and Linkage of Food Safety Mandates
- National Codex Organization Technical Committee
- Revised Policy on Rationalization and Strengthening of DA National and Regional Laboratory Services
- Food Fortification Technical Working Group
- Quality Assurance Committee
- PHILSUTECH on Chemical Handbook Revision

Laboratory Upgrading

Procured the following equipment:

- Orbital Shaker
- Digital Refractometer
- Digital thermometer
- Brix Hydrometer
- Auto Dry Box
- Centrifuge
- Table Top
- Blender/Nutrient Extractor
- Magnifying lamp
- Drying Oven

Laboratory Services



Environmental Laboratory

Samples Analyzed

Air emission

- Bacolod - 171 samples for Particulate Matter, 18 samples for Carbon Monoxide, 74 samples for Particulate Matter as PM10 were analyzed from 17 sugar mills
- Quezon City - 2,113 air emission samples from 12 sugar mills

Wastewater

- Bacolod - 27 wastewater samples obtained from six (6) sugar mills
- Quezon City - 12 water/wastewater samples from 10 sugar mills

Waste Management Program

The following are the activities accomplished by our Pollution Control Officer to further improve its waste management program:

1. 8-hour training for the managing head
2. Regular monthly inspection of the hazardous waste storage area
3. Renewal of the Pollution Control Officer (PCO) Accreditation
4. Finalization of the Hazardous waste management manual
5. Emergency response training for hazardous waste for SRA emergency response team
6. Release of discharge permit, a requirement for the DENR-EMB-SMR

Test Certificates Issued

| | Bacolod | Quezon City |
|---------------|---------|-------------|
| Air Emissions | 39 | 658 |
| Wastewater | 11 | 8 |



Awards and Citations

- The Environmental Laboratory Services was granted the Certificate of Recognition on March 15, 2021 by the Department of Environment and Natural Resources (DENR) for the scopes of Particulate Matter, Biological Oxygen Demand, Total Suspended Solids and Dissolved Oxygen upon compliance with the requirements of DENR Administrative Order No. 63, Series of 1998 or the Guidelines for the Designation of DENR Recognized Environmental Laboratories.
- Received 3 certificates of Laboratory Excellence by ERA-A Waters Company, an accredited Third Party Proficiency Testing Scheme Provider from USA:
 - January 2021 WP ERA Proficiency Testing Round 55 (Particulate Matter)
 - October 2021 WP ERA Proficiency Testing Round 321 (Biological Oxygen Demand and Total Suspended Solids)
 - October 2021 AE ERA Proficiency Testing Round 58 (Particulate Matter)

Environmental Monitoring - Mills and Refineries

- The SAGE (Special Action Group for the Environment (SAGE) Team composed of technical personnel from Factory Services and Research Division (FSRD) is accredited by the Department of Environment and Natural Resources (DENR) as Third Party Source Emission Testing Firm.
- Conducted sampling of particulate matter (PM), sulphur oxides (SO), nitrogen oxides (NOx) and carbon monoxide (CO) emissions nitrogen oxide, carbon monoxide and ambient air sampling.

Collection of wastewater and air emission samples

Conducted monitoring activities to 21 sugar mills and 1 bioethanol distilleries and collected a total of 2113 air emission samples and 12 wastewater samples

Publication

- 26 complimentary copies of 2019 Annual Compendium of Philippine Sugar Refineries were given to 12 sugar refineries and other interested stakeholders
- 58 complimentary copies of Annual Synopsis of Philippine Raw Sugar Factories Production and Performance Data, CY 2019-2020, were given to 27 sugar mills and other stakeholders

Milling and Refining Hardware 2020 Edition

6 sugarmills surveyed for updating the publication

- Central Azucarera de Tarlac
- Pensumil
- URC-SURE Balayan
- Carsumco
- Don Pedro
- Dasuceco

Digitization

- Aims to improve the accessibility of data in the synopsis through digitized system
- Data of 38 crop years of Annual Synopsis of Raw Sugar Factories were already completed



Extension Services

Capacity Building

- Conducted 45 trainings (virtual and face-to-face) related to farm management such Outreach Program for Sugarcane Industry (OPSI) and financial literacy with a total of 2,974 sugarcane farmers as participants
- Conducted 4 OPSI trainings (Visayas) for other stakeholders such as students and other government agencies

Distribution of IEC Materials

Reproduced and distributed 9,812 Information, Education, and Communication (IEC) materials such as brochures to sugarcane farmers and other stakeholders

Farm Visits and Advisory

Conducted 15,279 farm and home visits to 15,880 farmers

Top Priority Projects

Implemented the three (3) priority projects :

- Soil Rejuvenation/Fertilization Project - 928 hectares covered
- Rapid Propagation of HYVs - 57.91 hectares of seed farms established
- Water Management Projects - 54 irrigation facilities were distributed
- Adopt a Small Sugarcane Farming Family - 322 farming family beneficiaries

See full details in the next page

Field Validation

- 322 families has been validated and assisted as beneficiary of the project Adopt a Small Sugarcane Farming Family, a project of SRA to mitigate the negative impact of the COVID-19 pandemic to small sugarcane farming families.
- Conducted field validation and prepared Crop Estimate reports for the 26 sugarcane mill districts.

Technical Assistance

- Assisted MDDCs, Cooperatives, Associations, and private individuals in 967 cases / requests
- Responded in 1,094 walk-in consultations and referrals with 3,317 farmers served

Farmers' Profiling

Profiled and encoded a total of 34,869 sugarcane farmers as beneficiaries in Cash and Food Subsidy for Marginalized Farmers and Fisherfolks (CSFMFF) of the Department of Agriculture (DA) under the Bayanihan 2. Each farmer received Php 3,000 cash and Php 2,000 worth of food items from the Department of Agriculture.

SIDA Programs

Supervised and monitor the implementation of four (4) SIDA Programs namely;

- Block farm
- Infrastructure
- Socialized Credit
- Scholarship

Full details in pages 10-13



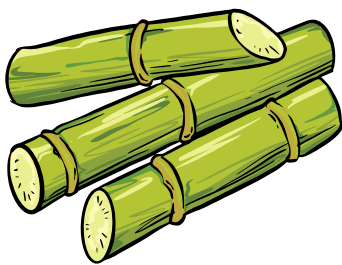
Top Priority Projects



Soil Rejuvenation and Fertilization

Sugarcane productivity improvement through soil rejuvenation and fertilization through provision of soil lime to correct soil pH and fertilizers to improve soil fertility.

- ✓ 3,733 bags of fertilizers distributed
- ✓ 461 beneficiaries
- ✓ 928 hectares covered
- ✓ 9 mill districts in Visayas region



Accelerated Seed Farm

Sugarcane productivity improvement through the distribution of good quality and best performing sugarcane varieties. Funding support to project cooperators of the development of sugarcane seed farm in the maximum amount of Php 85,000.00 per hectare of the said project

- ✓ 57.41 hectares of seed farms established*
 - Luzon - 17 hectares
 - Visayas - 40.41 hectares
- ✓ 12 mill districts covered
 - Luzon - 3 mill districts
 - Visayas - 9 mill districts
- ✓ 355,000 seed pieces produced
- ✓ 5 beneficiaries

*majority of the seed farms are newly established (3rd and 4th quarter of 2021)



Water Management and Irrigation

Increasing production of small sugarcane farmers by efficient and maximum utilization of the area through improved water management and adaption of irrigation technologies.

- ✓ 54 sets of rain gun irrigation system distributed
- ✓ 54 beneficiaries
- ✓ 14 mill districts covered in Visayas

Top Priority Projects

Adopt A Small Sugarcane Farming Family

This is a refocused program to mitigate the impact of COVID-19 pandemic to small sugarcane farming families. The target beneficiaries are twenty (20) small sugarcane farming families in every mill district. One hectare of sugarcane farm will be funded by SRA at Php 85,000.00 for each family.



Luzon

- ✓ 67 family-beneficiaries selected
- ✓ 54 hectares of farm established
- ✓ 7 mill districts covered

Visayas

- ✓ 222 family-beneficiaries selected
- ✓ 128 hectares of farm established
- ✓ 16 mill districts covered

Mindanao

- ✓ 33 family-beneficiaries selected
- ✓ 18 hectares of farm established
- ✓ 3 mill districts covered



Agricultural and Biosystems Engineering

Mapping

- Produced 366 yield maps which includes hazard, suitability map, climate projection scenario, and damage assessment using GeoDeSK.
- Prepared 122 Farm-to-Mill Roads (FMRs) network maps in 26 mill districts
- Produce the maps of 42 proposed FMRs for 2022 GAA funding
- Maintain Geospatial Decision Support Network (GeoDeSK) which is a modeling decisions support tool thru GIS maps that could be used to identify the most effective decision path and the appropriate resources to employ, generate climate based yield forecasts, assess typhoon damage and related weather impact on sugarcane productivity, and provide farm advisories and geospatial services.

Typhoon Damage Monitoring

Use remote sensing technology, satellite images and available weather data to produce rainfall graphs and typhoon affected areas.

- Typhoon Jolina in September 2021 has affected 283,072.5 hectares in mill districts of Tarlac, Pampanga, Don Pedro, Balayan, Iloilo, Capiz, BogoMedellin and Ormoc.
- Typhoon Odette in December 2021 has affected 375,157 hectares in mill districts of Bukidnon, Ormoc, La Carlota, Biscom, Sonedco/Dacongcogon, Bais-Ursumco, Tolong, Iloilo and Capiz.

Agricultural Engineering Services

- Provided 85 technical assistance related activities such as conduct of farm machinery assessment, establishment of the sugarcane farm machinery master plan, and assisted in various SRA farm machinery distribution activities
- Monitored 99 FMR projects funded under the 2019-2021 GAA
- Reviewed and endorsed the final 56 FMR projects for 2021 GAA funding.

Crop Estimation

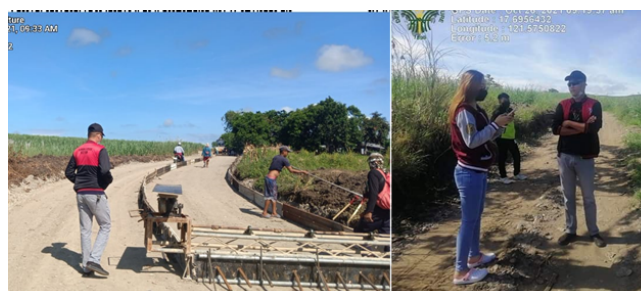
Weather data consolidation. Consolidated data on a weekly and monthly basis to assess the agro-climatic conditions in sugarcane areas. It includes temperature, humidity, solar radiation, air pressure and rainfall.

Automatic Weather Stations. Monitored and maintained 40 AWS installed in 24 mill districts

Automated sugarcane yield maps. Has tied up with the DOST-ASTI on the automation process of yield map.

Final crop estimate for Crop Year 2020-2021

| Parameters | CY 2020-2021 |
|-----------------|---------------|
| Area (hectares) | 400,705.07 |
| Cane (MT) | 23,384,271.04 |
| Raw Sugar (MT) | 2,190,190.41 |
| TC/Hectare | 58.36 |
| LKG/Hectare | 109.32 |



Regulatory Services

Sugar Policies

Sugar Order No. 1, Series of 2020-2021, issued in September 2020 provided that for Crop Year 2020-2021, the allocation of all raw sugar production shall be quedanned by mill companies into:

- 7% as "A" or US Market Sugar
- 93% as "B" or Domestic Sugar Market

Sugar Order No. 1-A, Series of 2020-2021, issued in March 2021 amended allocation sugar production due to drop in the estimate of domestic productionn brought by the effects of La Niña particularly in negros areas. Hence, all raw sugar production starting weekendng April 4 and subsequent week endings of CY 2020-2021 shall be quedanned as all "B" sugar or 100% for domestic use.

Sugar Order No. 2, Series of 2020-2021 provided for the filling up of US quota allocation of 142,000 MTRV to the Philippines.

Imports

For CY 2020-2021, SRA issued the following clearances related to the imports of specialty sugar which are not produce in the Philippines and also the sugar requirements of sugar-based manufacturers:

- 2,534 Premix Commodity Release Clearance
- 521 Imported Sugar Release for CBW/Food Processors
- 50 Molasses Imported Clearance
- 92 Certificate of Sugar Requirements
- Collected Php 28,369,553.72 CBW Monitoring Fee
- 161 Import Program Clearances in the total volume of 95,749.25 MT
- 259 High Fructose Corn Syrup (HFCS)/ Chemically High Fructose Import Clearances

Registration Certificates and Licenses to Operate



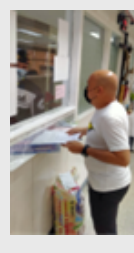
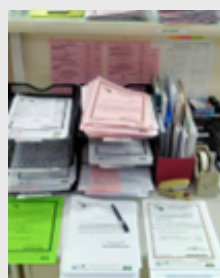
557 Issued Licenses/Certificates

Traders - 492
Mills - 27
Refineries - 12
Bioethanol - 10
Warehouse - 16

Exports

For Crop Year 2020-2021, the SRA has issued the following clearances related to the exports of 112,008 Metric Tons of raw sugar to the United States and exports of molasses and muscovado to other world markets.

- 64 Certificates Quota of Eligibility (CQE) for sugar in the total volume of 112,008.17 MT to enter in the United States
- 173 Certificates of Verified "A" export sugar
- 337 Certificates of Exchange Authority (CEA) of 109,799.49 MT raw sugar
- 178 Inloading Clearances, 64 Outloading Clearances, and Export Clearances with a total volume of 133,333.05 MT to ensure the filling-up of US quota.
- 1 Molasses Export Clearance
- 208 Muscovado Export Clearances in 423,526.53 MT



Regulatory Services

Collection of Fees and Liens



Regulation and enforcement

Shipping permit fees
Sugar quedan fees/liens
BRDE liens and monitoring fee - Bioethanol
Monitoring fees - raw to refined

Sugar transactions

Clearance fees for exports of sugar, molasses and muscovado
Clearance fees for importation
Monitoring fees for imported sugar (Custom Bonded Warehouse)
Application for sugar requirements

Licensing

Registration/License fees - sugar mills, refineries, bioethanol distilleries, traders, warehouse)

Laboratory

Analysis fee - sugar and environmental

Regulation and Enforcement



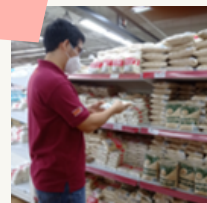
Attestation of sugar quedans and molasses certificates.

682,103 For CY 2020-2021, SRA's Regulation Officers have **signed/attested sugar quedans** and **molasses certificates** that are being issued by the sugar mills to the sugarcane planters. Sugar quedan and molasses certificate are receipts showing that during the crop year, a sugarcane planter owns a specific amount of sugar and molasses stored in the warehouse/tanks of a sugar central. Quedans and molasses certificates are negotiable instruments hence, use as trading documents between planter and trader.

19,543 shipping permits issued to monitor the coastwise movement of sugar

7,580 Sugar Release Orders and **Molasses Release Orders** verified/certified

Monitoring Activities



Crop Year 2020-2021

Production

Sugarcane - 25,276,061 MT
Raw sugar - 2,143,018 MT
Refined sugar - 15,176,795 LKG
Molasses (raw and refined)- 1,165,383.550 MT

Withdrawals

Raw sugar - 2,145,374 MT
Refined sugar - 18,194,832 LKG

Stock Balance

Raw - 252,483 MT
Refined - 2,872,431 LKG
Molasses - 194,034.291 MT

Raw sugar exports to United States - 112,008.19 MTRV

Sugar Replenishment Program - 95,757.66 MT

Average Millsite Prices

Raw sugar composite - P1,557.80 /LKG
Molasses - P9,315.13/MT

Average Prevailing Metro Manila Prices

| | Wholesale, P/Lkg | Retail, P/Lkg |
|----------------|------------------|---------------|
| Raw | 1,737.50 | 45.00 |
| Washed | 1,860.83 | 49.29 |
| Refined | 2,233.33 | 51.50 |

General Administrative Services

Employees' Welfare



To ensure the SRA employees safety from COVID-19 virus, the following are implemented:

- Facilitated vaccines and booster shots to SRA employees, contract of service (COS), pakiao workers and security guards
- Distributed facemasks and alcohol disinfectants
- Assisted thirteen (13) employees to claim Covid-19 benefits from the Employees Compensation Commission (ECC)
- Provided shuttle service for employees
- Implemented work-from-home working arrangements for employees during high Covid alert levels
- Provided assistance to affected employees in LGAREC while on lockdown because of the spread of virus in the compound.
- Encouraged utilization of video-conferencing apps such as Zoom, Google Meet and Webex instead of face-to-face meetings
- RT-PCR and Antigen Test were offered to employees/COS manifesting symptoms of Covid infection

Trainings and Seminars



The Human Resources unit of SRA processed and facilitated attendance of employees to 26 trainings and seminars.

Organizational Strengthening (OS)

The Governance Commission for GOCCs (GCG) has given SRA the go-signal to implement its Organizational Strengthening (OS) since 2020. The SRA has accomplished the following related to OS:

- Processed the documents for the appointment of the following hired positions:
3 Deputy Administrators (Regulation, Research Development and Extension, Administration and Finance)
22 drivers and utility personnel

CPCS Approval

The Compensation and Position Classification System (CPCS) was approved through Executive Order No. 150. SRA as GOCC shall apply the appropriate salary structure, and the allowances, benefits and incentives under CPCS effective October 05, 2021 in accordance with CPCS Implementing Guidelines.

Manpower Complement

| Particulars | Approved | Filled | Unfilled |
|--------------------------------|------------|------------|------------|
| Permanent Personnel | 448 | 222 | 226 |
| Non-Permanent Personnel | | | |
| Personnel charged under MOOE: | | | |
| Job Orders | | | |
| Contract of Service | 355 | 355 | |
| Total Manpower: | 803 | 577 | 227 |

General Administrative Services

Procurement

- ✓ **25** Invitation to Bid
- ✓ **20** Public Biddings conducted
- ✓ **165** Issued Notice of Award
- ✓ **22** Issued Notice to Proceed

- ✓ **100%** Compliance to RA 9184
- ✓ **0** Failed bidding
- ✓ **1** Seminar on the Updates on RA 9184 participated by BAC Members and Technical Working Group. This was conducted by the Government Procurement and Policy Board (GPPB)



Building Maintenance



Conducted renovation of the following buildings:

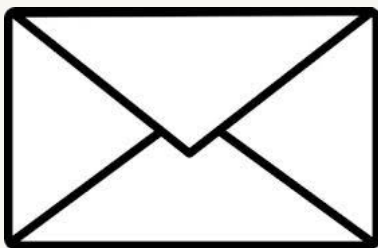
- ✓ Annex Building for occupancy of Bureau of Agriculture and Fishery Engineering (BAFE)
- ✓ 3rd and 4th Floors of SRA Main Building for occupancy of FSRD-RDE and Administrative and Finance Department, respectively

- ✓ **100%** Compliance to Preventive Maintenance Schedule of SRA Service Vehicles, elevators, generators, transformer, substation.

- ✓ Toxic material storage area for RDE laboratory services



Policy Dissemination



- ✓ **6** Sugar Order
- ✓ **41** Circular Letter
- ✓ **4** Memorandum Order
- ✓ **17** Memorandum Circular
- ✓ **2** Office Circular

Compliance



QMS-ISO 9001:2015

The SRA is certified by TUV Rheinland compliant to ISO 9001:2015 standards. In 2021, SRA ensures that the Quality Management System (QMS) conforms to the standards of ISO 9001:2015. In 2021, the following was conducted to maintain certification to the ISO 9001:2015 standards:

1. 2nd Surveillance Audit by TUV Rheinland as certifying body. Based on the result of audit, the SRA is generally compliant to ISO 9001:2015 requirement and passed the CB audit with zero non conformities.
2. Conducted Capacity Building Activities to process owners and internal quality auditors
 - Fundamentals on Remote Auditing Based on ISO 19011:2018.
 - Building Resilient Organization Through QMS in the #Next Normal.ph
3. Conducted 2 Internal Quality Audits to enrolled processes in QMS
4. Management Review meeting to evaluate the effectiveness of QMS



COA - Audit Observation Memorandum (AOM) AOMs Addressed

- 12** fully implemented
- 11** partially implemented

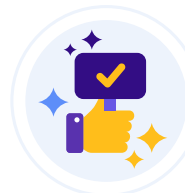
In SRA Visayas, zero audit suspensions, disallowances and charges found in the Audit of all funds of the Agency as of June 30, 2021, September 30, 2021, and December 31, 2021 respectively based on the Notice of Suspension (NS), Notice of Disallowance (ND), Notice of Charge (NC) issued by the Commission on Audit (COA).



Freedom of Information (FOI)

Executive Order No. 02 or the Executive Order on Freedom of Information (FOI) aims to promote an open government by increasing the transparency of the executive branch and its agencies. It strengthens the right to information as enshrined by the constitution.

In compliance to FOI, the SRA has responded to **22 FOI requests** which were monitored and uploaded in SRA website.



Customer Satisfaction Survey (CSAT)

- Successfully conducted CSAT for 2021 through a third-party service provider
- Overall customer satisfaction rating is **85%** based on the result of CSAT
- Breakdown of ratings:

Regulated entities which include mills, refineries, traders (sample size = 100): **94.00% satisfaction rating**

Farmers which represents planters federations, block farms (sample size = 500) : **83.17% satisfaction rating**



Anti-Red Tape

Republic Act 11032 or the Ease of Doing Business and Efficient Government Service Delivery Act of 2018 is an act which aims to streamline the current systems and procedures of government services.

100% compliance

Uploaded and posted the Citizen's Charter in SRA Website and SRA building premises where the list of SRA services including the fees and processing time are provided.

Support Services



Updating of the Sugarcane Industry Roadmap

- Conducted 9 stakeholders consultations for the preparation of inputs in the updating of the Roadmap
- Participated in the Regional and National Food Security Summits organized by the Department of Agriculture
- Memorandum Circular No. 11 created the Sugarcane Industry Stakeholder Consultative Assembly (SCA) which is composed of representatives from different industry sectors (farmers, millers, refiners, ethanol producers, MDDCs). The consultative assembly shall serve as forum where SRA shall conduct consultations prior to approval and implementation of programs.



Foreign Assisted Project: Japan Non-Project Grant Aid for the Small Sugarcane Landholders

- The Japanese and Philippine government entered into an agreement via Exchange of Notes for the project *Farm Mechanization Program for Small Sugarcane Landholders* or Japan Non-Project Grant Aid (NPGA) for brevity.
- The Office of the President approved the implementation of the Project in June 2021
- The Memorandum of Agreement between SRA and Department of Finance (DOF) is approved on August 2021
- Under this Project, the Japan government committed a total amount of 800 million Japanese Yen for the procurement of 70-80 sets of farm machineries composed of 1 farm tractors and 3 implements such as power harrow, sugarcane wholestalk planter and mulcher
- In 2021, SRA NPGA Evaluation Committee has received and evaluated a total of 52 applications representing the 25 mill districts nationwide
- On July 2021, SRA issued Memorandum Circular No. 5 or the Revised Implementing Guidelines of the Japan Non-Project Grant Aid to SRA on Economic and Social Development Programme



Special Projects

SRA commissioned the University of the Philippines – Los Baños (UPLB) to conduct a study on the environmental impact of sugar production in 10 sugar mills and 7 bioethanol distilleries in the Philippines. The 2 projects were completed in 2021.

Socio-Economic and Environmental Impact of Bioethanol Production in the Philippines.

The seven (7) bioethanol distilleries contributed a total of 268,091.15 tons CO₂e per year as avoided GHG.

Socio-Economic and Environmental Impact of Sugar Production in the Philippines.

The ten (10) sugar mills have an average carbon footprint of 0.5775 kilograms of carbon dioxide equivalent (CO₂e) per kilogram of raw sugar manufactured.

RA 11494 - Bayanihan to Recover As One Act: Cash And Food Subsidy For Marginal Farmers And Fishfolks (CSFMMF)

Under the stimulus package of the Department of Agriculture (DA), the Sugar Regulatory Administration (SRA) was given a P150 million allocation to assist 29,702 small sugarcane farmers. The CSFMMF aims to provide direct food and financial assistance in the total amount of P5,000 to each eligible sugarcane farmer. Prior to its implementation, the SRA has submitted to the DA the following selection criteria to establish eligibility of the farmers who will receive the assistance:

1. Total landholding of farmer devoted to sugarcane is 3 hectares and less.
2. The farmer-beneficiary is the actual tiller of the land.
3. The farmer is registered to Municipal/National Registry System of Basic Sectors in Agriculture (RSBSA)

An amount of P3,000 was given as cash and P2,000 worth of chicken and eggs were provided to each sugarcane farmer. The distribution of cash and food subsidy was assisted by SRA's Extension Services Divisions in Luzon/Mindanao and in Visayas to all farmers-beneficiaries from November 2020 to June 2021 in coordination with the DA Regional Offices (for schedule of distribution), with the DA-accredited food suppliers (for chicken and eggs) and local ML Lhuillier (for cash assistance).

SRA has given the cash and food subsidy to 100% of its target beneficiaries. A total of 29,707 small sugarcane farmers received the assistance.

Support Services

COVID-19 Response

To mitigate the effects and to prevent the spread of Covid 19 infections, the SRA has issued the following measures:

Memorandum Circular No. 6, Series of 2020-2021, Digitalization and Covid-19: An Online Platform to Improve the Efficiency of SRA's Critical Regulatory Services - this was a survey conducted to internal and external stakeholders to assess the readiness of the stakeholders in the development of online platform system for the efficient delivery of Agency's regulatory services as response to the Covid 19 pandemic.

Memorandum Circular No. 8, Series of 2021, issued to all sugarcane industry stakeholders to observe the Memorandum issued by the Department of Agriculture re "Guidance to ensure access to safe and affordable food during the enhanced community quarantine, relative to IATF resolution no. 130-A.

Legal Services

The SRA Legal Department serves as the consulting body of management and its employees on legal matters and issues. It is tasked to:

- Draft, review and notarize contracts such as Deed of Absolute Sales, Deed of Donations, Memorandum of Agreement and the like executed between SRA, represented by its Administrator or any authorized signatory, and the representative of other contracting parties
- Conduct Administrative Investigation on all matters arising from complaints in violation of its issuances such as sugar orders, memorandum circulars, and to conduct investigation to any erring employee
- Attend to concerns of the sugarcane farmers, particularly the Agrarian Reform Beneficiaries (ARBs)

Management Information System (MIS)

- ✓ Developed 4 new computer system/ program and database (HRIS, Payroll, Crop Estimate, Online Payment)
- ✓ Prepared and endorsed to Sugar Board for approval the Information Systems Strategic Plan (ISSP) for 3-year period of 2021 to 2023
- ✓ Procurement of webinar applications (Zoom and Microsoft Teams)

Kadiwa Market

Kadiwa is a market system which sells major agricultural goods at reasonably low prices to help poor Filipino households. Kadiwa is loosely translated as "one idea, one thought" which is in consonance with the Secretary's "New Thinking" for Agriculture paradigm. In support to DA, the SRA pushed for the establishment of Kadiwa rolling store in the SRA Quezon City in the SRA Quezon City compound every Friday where many customers benefited from low-priced agricultural commodities like sugar.



- ✓ **11** No. of cases handled with the Court
- ✓ **2** No. of administrative cases handled
- ✓ **35** No. of block farms / ARBs assisted on matters that involved legal issues
- ✓ **85** No. of legal opinions provided or rendered to SRA management, Sugar Board, Office of the Administrator and other officers and operational departments
- ✓ **5** No. of comprehensive and continuing legal study and research particularly on legal issues pertaining to the operation of SRA and the sugarcane industry

Gender and Development

Despite all the odds and challenges brought by the Pandemic, the SRA-GAD has continued its positive momentum in 2021 in doing significant and worthwhile projects/activities for the agency personnel which is both relevant and timely especially during these difficult times. Among the significant accomplishments for the year are the following:



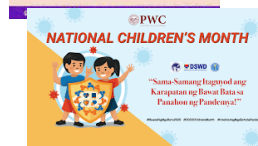
Women's Month Celebration

In observance of the 2021 National Women's Month celebration in March, the SRA-GAD theme, "Juana Laban sa Pandemya: Kaya!" is a timely project in line with the Philippine Commission on Women's (PCW) theme. As a kick-start activity of the SRA-GAD committee in Quezon City, they distributed plants with gender statements as giveaways to agency personnel. Other activities prepared included a photo booth where employees and COS personnel posed for souvenir photos. The SRA-GAD also sponsored a contest where every Juan and Juana shared their heartwarming and inspiring stories about rising from the challenges they faced during the pandemic. Aside from recognition, special grocery items were given as tokens to those who participated.



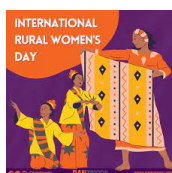
National Family Week Celebration and National Children's Month Celebration

The SRA-GAD joined in the observance of these two important celebrations. These are really a fitting tribute to what is referred to as the basic unit of the society and highlighting the value of children as the hope and future of our country.



National Disability Prevention and Rehabilitation Week

The SRA joined in the observance of the 43rd National Disability Prevention and Rehabilitation Week (from July 17-23, 2021) with the theme, "Kalusugan at Kaunlaran ng Pilipinong May Kapansanan, Isulong sa Gitna ng Pandemya!"



National Rural Women's Month

Through SRA's Research Extension and Development (RDE) Department, another exemplary Client-Focused project is the provision of planting materials/tools, seeds and seedlings. All of these were distributed to block farm beneficiaries in the Luzon and Mindanao Sugarcane Mill Districts. This project aims to provide incentives to rural women. This is also SRA's response and contribution in support to the DA's Plant, Plant, Plant Program.



Year-End Assessment, Planning and Goal Setting for 2022

SRA-GESI Technical Working Group (TWG) and SRA Organizations' key representatives conducted the activity as an essential step to further strengthen and improve the committee's planning strategy in 2022 and is a fitting culminating activity for the year.



18-Day Campaign to End Violence Against Women (VAW)

The SRA joined in the observance of this campaign led by SRA-GAD Technical Working Group (TWG) by wearing specially designed T-shirts and face masks prescribed by the Philippine Commission on Women (PCW). Meanwhile, the SRA-GAD Visayas filled its grounds with orange balloons and orange lights especially during night time.



Distribution of Rice and Health Essentials to Employees

Part of SRA-GESI's Covid 19-related projects for the year. Recipients were very glad and grateful for this timely, meaningful and relevant assistance provided for them.

Directory

| Office | Name | Designation | Email Address / Tel. No. |
|---|-----------------------------------|-------------------------------------|--|
| Office of the Sugar Board | Sec. William D. Dar, Ph.D. | Chairperson, and DA Secretary | osec.da@gmail.com / (632) 8920-4369 |
| Office of the Administrator | Engr. Hermenegildo R. Serafica | Administrator | srahead@sra.gov.ph / (632) 3455-3376 |
| Research, Development, and Extension | Atty. Ignacio S. Santillana | Deputy Administrator II | dep.adm.rde@sra.gov.ph/ (632)3455-8615 |
| Research, Development, and Extension - Luzon / Mindanao | Dr. Marietta Dina P. Fernandez | OIC- Department Manager III | rde_mgr@sra.gov.ph/ (632)8236-0001 |
| Research, Development, and Extension - Visayas | Ms. Ma. Lourdes I. Dormido | OIC- Department Manager III | rde_managervis@sra.gov.ph/ (6334)433-6887 |
| Regulations | Atty. Guillermo C. Tejada III | Deputy Administrator II | dep.adm.rd@sra.gov.ph/ (632)8929-9223 |
| Regulations - Luzon/ Mindanao | Mr. Luisito C. Malagkit | OIC- Department Manager III | rd_mgr@sra.gov.ph/ (632)8929-9223 |
| Regulations - Visayas | Mr. Wilfredo R. Monares | OIC- Department Manager III | rd_managervis@sra.gov.ph/ (6334)434-1470 |

Directory

| Office | Name | Designation | Email Address / Tel. No. |
|--|----------------------------------|-----------------------------------|---|
| Administration and Finance | Atty. Brando D. Noroña | Deputy Administrator II | dep.adm.afd@sra .gov.ph/ (632)8929-7187 |
| Administration and Finance - Luzon/ Mindanao | Ms. Erlinda J. Abacan | OIC- Department Manager III | afd_mgr@sra.gov. ph/ (632)8926- 6471 |
| Administration and Finance - Visayas | Engr. Dorothy B. Rodrigo | OIC- Department Manager III | afd_vis@sra.gov.p h/ (6334)435-3557 |
| Internal Audit | Mr. Jay Andrew T. Adrias | OIC- Department Manager III | iad_mgr@sra.gov. ph/ (632)8929- 6131 |
| Legal | Atty. Guillermo C. Tejida III | OIC- Department Manager III | legal@sra.gov.ph/ (632)8236-0063 |
| Planning, Policy, and Special Projects | Ms. Rosemarie S. Gumera | Department Manager III | ppspdsra@sra.go v.ph/ (632)8929- 6137 |



SUGAR REGULATORY ADMINISTRATION **2021 ANNUAL REPORT**



Sugar Center Building, North Avenue, Quezon City



www.sra.gov.ph



7 445 0446 / 8 916 6137



srahead@sra.gov.ph